

# NYC - Heat Training Curriculum and Day Laborer Survey

Mount Sinai Icahn School of Medicine

Paula Malibran-Aguirre\*

Kenny Ruiz\*\*

\*Public Health Studies - Johns Hopkins University

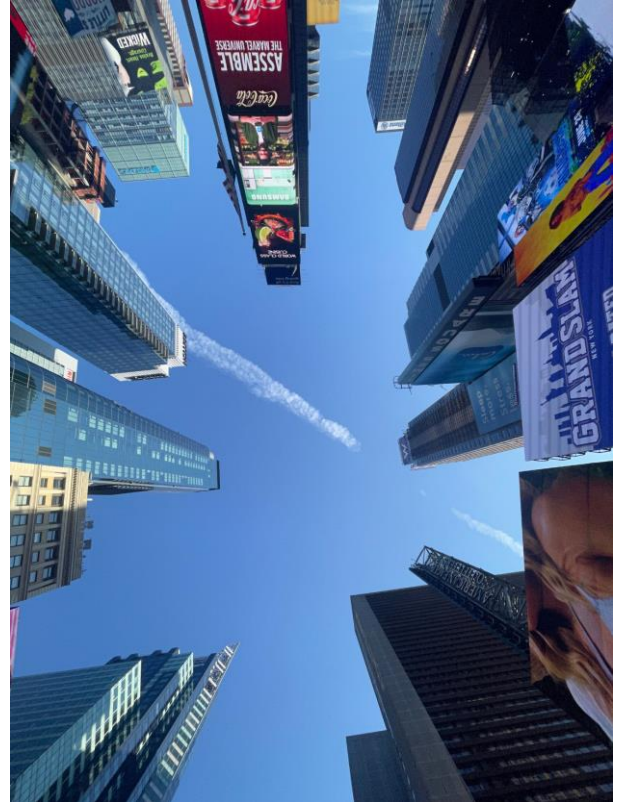
\*\* MPH Candidate - Rutgers School of Public Health



# Background

---

- Heat-related illness and death are completely preventable (CDC, n.d.)
  - Immigrants, older adults, children, and those with pre-existing conditions
- No federal standard for heat exposure in the workplace
- Teaching others about climate change and heat exposure
  - Climate change, sources of workplace heat exposure, and heat-related illnesses



# Objectives/Goals

---

- Host organization:
  - Train-the-Trainer curriculum on heat exposure for OSHA trainers
  - Survey Hispanic day laborers
- Paula:
  - Be fulfilled with the give-back product for the community
  - Leave a lasting impact in the future health of outdoor workers
- Kenny:
  - Training curriculum
  - Meeting/understanding NYC day laborers



# Methods

---

- Train-the-Trainer Curriculum
  - Literature review
  - Outline/Learning curriculum
  - Creating modules
  - Translation
- Day Laborer Survey
  - Revising existing survey
  - Don Bosco Workers



# Methods - Training Curriculum

---

- Train-the-Trainer Curriculum
  - Climate Change
  - Sources of Occupational Heat Exposure
  - Monitoring of Workplace Heat Exposures
  - Heat-Related Illnesses
  - Preventative Practices & Action Plans
  - Heat Exposure Policies, Workers Rights, & Resources
  - Lab Practice



# Methods - Day Laborer Survey

## Day Laborer Survey

- Survey designed to understand the impacts of heat on the health of Hispanic day laborers
- Survey explores:
  - Self reported health
  - Heat exposures at work
  - Recommendations to reduce exposures

**Percepción al Calor del Trabajador en el Lugar de Trabajo** AAA

Please complete the survey below.

Thank you!

**ID del entrevistador:**   
\* must provide value

**Fecha:**   
(e.g. (MM/DD/YY))  
\* must provide value

**SECCIÓN 1: ANTECEDENTES EN PAÍS DE ORIGEN**

**1) Edad:**   
\* must provide value

**2) País de nacimiento:**   
\* must provide value

**3) ¿Cuál era su último trabajo en su país de nacimiento?**  Agrícola  
 Construcción  
 Transporte  
 Fabricación  
 Turismo  
 Otro

reset

Fabiola\_Homero and Ana 8/2/24



# Make the Road NY

---

- Multi-state organization
- Advocates for:
  - Immigrants
  - Minority populations
  - Working class populations
- Training modules
  - Verbiage
- Connected to Don Bosco Workers
  - Surveys



# Results/Successes

---

- 7-module Train-the-Trainer curriculum
  - English & Spanish
  - >210 slides
- Worker risk perception survey
  - 11 surveys and interviews were conducted
- Make The Road New York in Queens
  - Met with community health workers

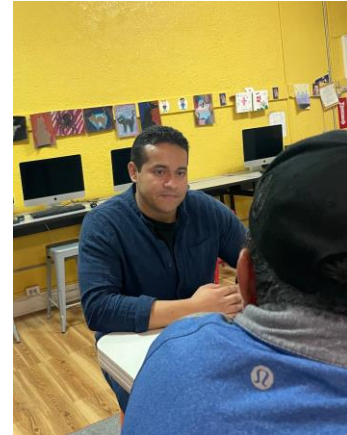




# Hispanic Day Laborers

---

- Don Bosco Workers
  - Community center
  - Port Chester, New York
- Met with Hispanic Day Laborers
  - Administered survey
- Experiences working in the US and in the New York State area



# Challenges

---

- Stock photos
  - Time consuming and tedious
  - Hard to find photos that accurately represented the message we wanted to get across
- Meeting with day laborers
  - Finding suitable time



Pexels



# Recommendations

---

- Short time-frame
  - We had to speed through the creation of modules and translations
  - Limited time in the field
- More community feedback
  - More time pilot testing



# Personal Reflections

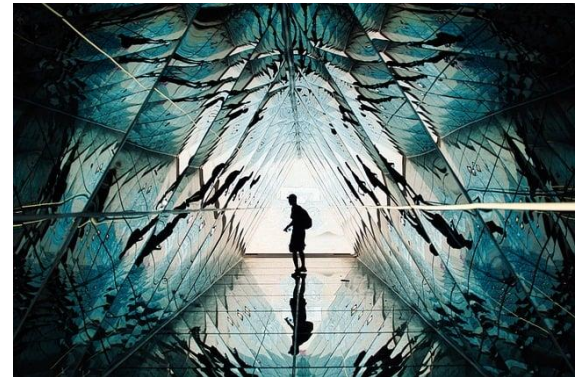
---

Paula:

- Learned how to effectively communicate public health messages to the community
- Experienced assessing and implementing solutions for a public health problem in a real life context

Kenny:

- Reinforced commitment to public health
- Understood the dangers of heat exposure in the workplace



# Acknowledgements

---

OHIP Staff

NIOSH

Homero Harari, ScD, MSc, Icahn School of Medicine at Mount Sinai

Mitchel Rosen, PhD, Rutgers University

Matt London, OHIP East Coast Coordinator

Arturo Archila from The Labor Institute and Make the Road New York

Don Bosco Workers and their community members



# References

---

Centers for Disease Control and Prevention. (2024). *Extreme heat and your health*.

<https://www.cdc.gov/extreme-heat/about/index.html#:~:text=Heat%20related%20deaths%20and%20illnesses,the%20extreme%20heat%20this%20summer>

Environmental Protection Agency. (2024). *Causes of climate change*. <https://www.epa.gov/climatechange-science/causes-climate-change#:~:text=Human%20Versus%20Natural%20Causes&text=Rather%2C%20it%20is%20extremel>

[y%20likely,dominant%20cause%20of%20that%20warming.&text=Human%20activities%20have%20contributed%20substantially,Absorption%20of%20the%20Sun's%20Energy](https://www.epa.gov/climatechange-science/causes-climate-change#:~:text=Human%20Versus%20Natural%20Causes&text=Rather%2C%20it%20is%20extremel)

National Integrated Heat Health Information System. (n.d.) *Who is at risk to extreme heat?*

<https://www.heat.gov/pages/who-is-at-risk-to-extreme-heat>